

A luxury semi-permanent marquee structure, providing a blank canvas for you to theme your corporate event or exhibition.

An outstanding space, having its own covered patio area and separate entrance with Foyer. The Wyatt Pavilion is transformed on a regular basis into our Starlight Marquee for Events and Christmas Party Nights. Functions like the Blues Brothers and ABBA tribute evenings, Murder Mystery, Casino and Race Nights – as well as many memorable private celebrations – have all been enjoyed by party goers in the Pavilion.

For a Sales Presentation or Conference we have staging and equipment available, and all the bar and catering services you would expect from a top class venue.

The Wyatt Pavilion can accommodate 150+ pax theatre style, 160 classroom or 80 cabaret style.

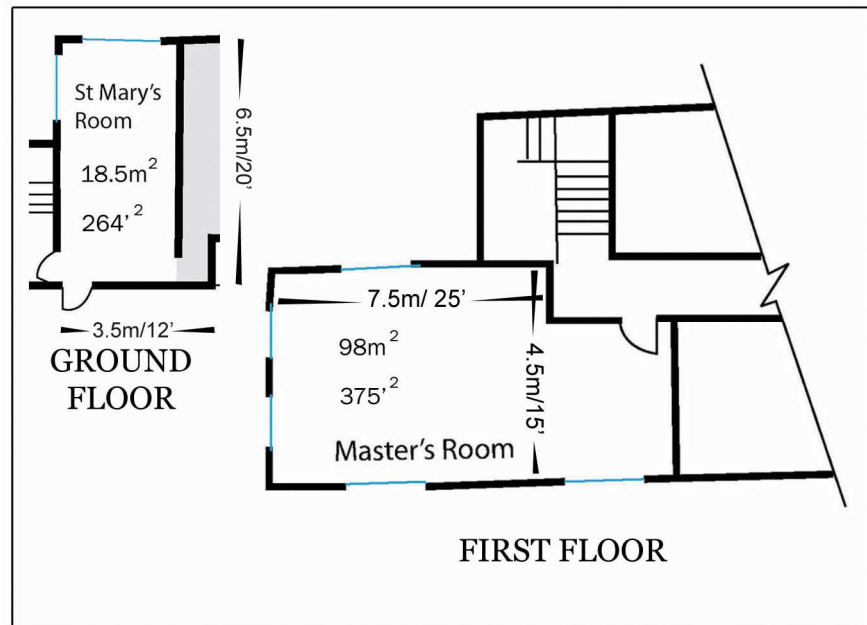
For a special lunch or dinner dance it can easily accommodate 150.

Weeford Nr.Lichfield,
Staffordshire WS14 OPW

Tel: 01543 480009

Fax: 01543 480470

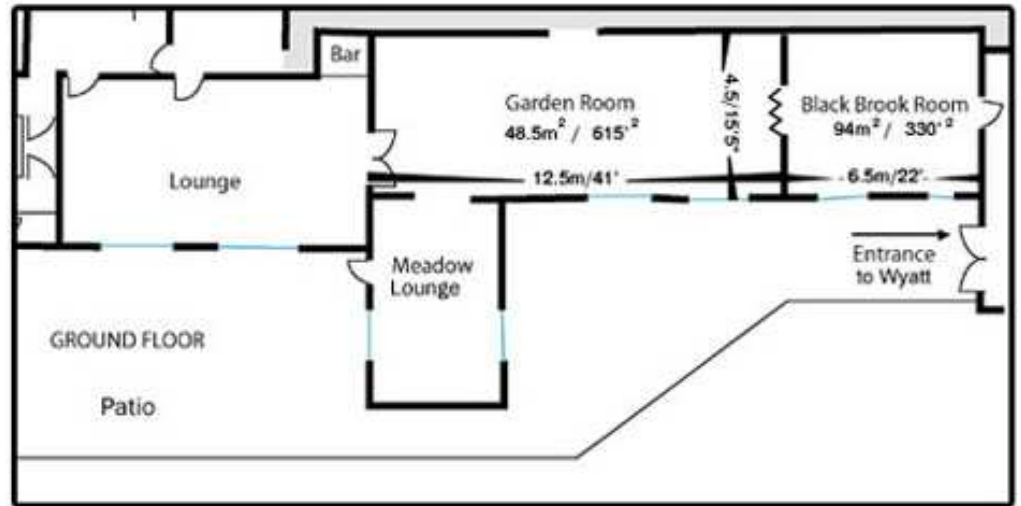
meetings@oldschoolhouse.co.uk
www.oldschoolhouse.co.uk



The Master's Room is thus called as it was once the Headmaster's Study, although with its current, more sumptuous decoration you would not recognise it as such. Located on the first floor, it makes a perfect private dining room for 30 guests. It is also ideal for training up to 20 delegates, who will be relaxed and inspired by the views across the meadows, and therefore receptive to your training or meeting content. .

These two rooms are ideal when reserved together for training or meeting and private dining, having similar capacities for seating.

The St. Mary's Room adjacent to the lounge will seat 20 theatre style, 16 classroom or boardroom style.



These two delightful rooms are adjoined by our lounge and the Meadow Room, leading onto a patio overlooking Black Brook and Weeford meadows. They are ideal as meeting and breakout areas, or meeting and private dining rooms.

They are decorated and furnished to a high quality and, when combined, form the main restaurant area, offering flexibility for both private and public dining facilities.

The Garden Room will comfortably seat 40 dining or 40 theatre style whilst the Black Brook adjacent room will open up via sliding doors for private dining area or meeting for 32 theatre style.